





Derby Road, Hoddesdon, EN11 0BG

Westwood Leber is thrilled to present this captivating four-bedroom detached residence, available with no onward chain. Nestled behind a secure gated entrance, this home guarantees both seclusion and security. Its expansive front façade is complemented by a beautifully landscaped rear garden, featuring a chic decked area and easy-care artificial turf.

As you step inside, you are welcomed by a striking hallway that flows into the generous living spaces on the ground floor. This level includes a handy cloakroom, a dedicated home office perfect for remote work, and an inviting lounge alongside a separate dining area. The exceptional kitchen/breakfast room showcases sleek granite countertops and integrated appliances, complemented by a fully-equipped utility room.

Outside, you'll find an additional office space, ideal for remote working arrangements.

On the upper floor, the home offers four generously sized bedrooms, with the master suite benefiting from a lavish en-suite bathroom. A modern family bathroom serves the other rooms, ensuring convenience. This meticulously cared-for property masterfully blends elegance with practicality, making it a perfect fit for families seeking their dream home.



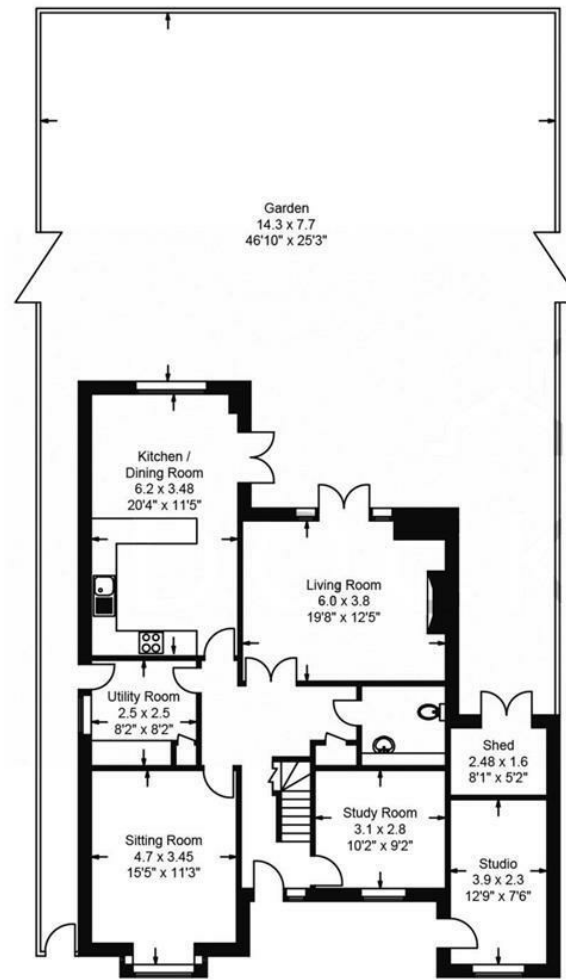
WESTWOODLEBER

WESTWOODLEBER
LET US GUIDE YOU HOME

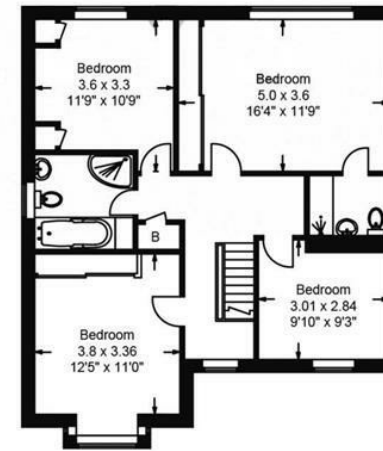
Langley, Derby Road

Approximate Gross Internal Area

174.83 sq m / 1881.85 sq ft



Ground Floor



First Floor













